



# MONTHLY MEMBERSHIP PROGRESS REPORT

District 201V3

Results as of: 05/31/2018

GMT: ANN ELDRIDGE

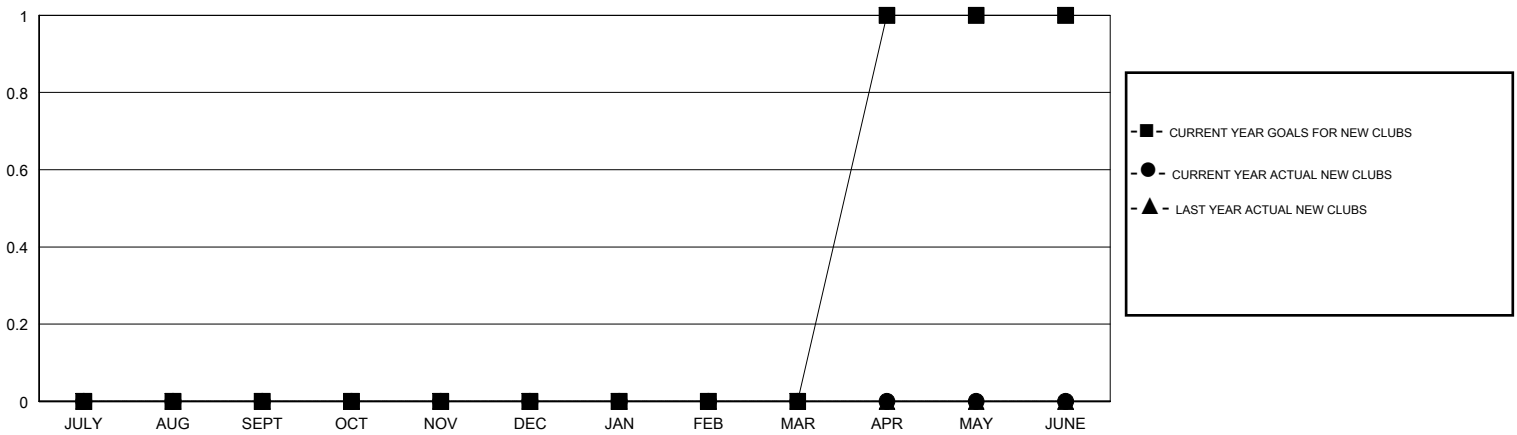
LOCATION AUSTRALIA

GMT CA

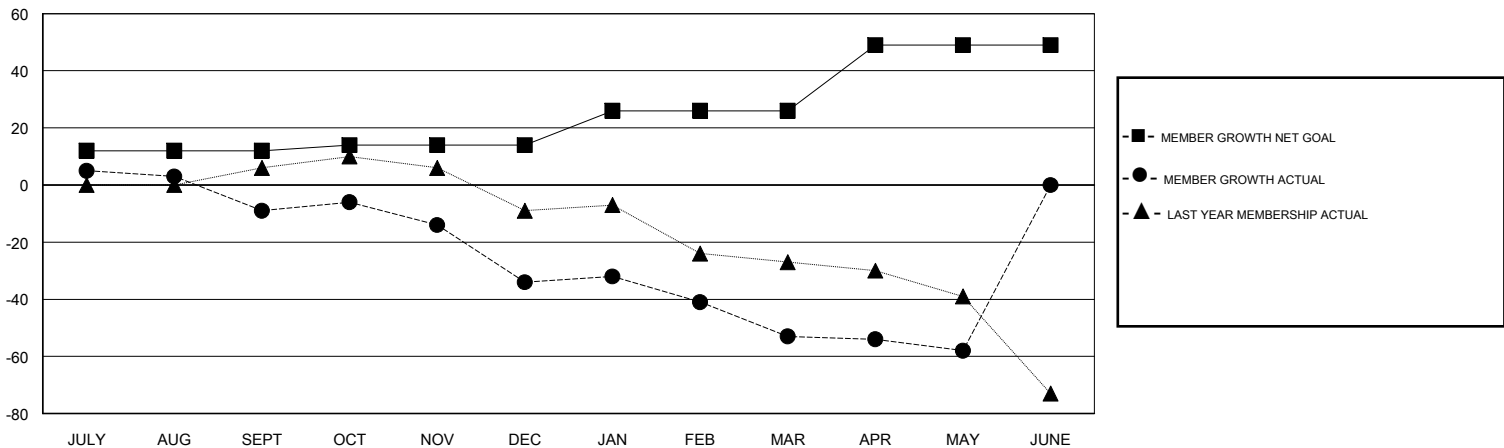
Clubs			
RESULTS FOR 2017-2018			
QUARTER	NEW CLUB GOAL	NEW CLUBS	DROPPED CLUBS
JULY/AUG/SEPT	0	0	0
OCT/NOV/DEC	0	0	0
JAN/FEB/MAR	0	0	0
APR/MAY/JUNE	1	0	0

Members			
RESULTS FOR 2017-2018			
QUARTER	MEMBER GROWTH NET GOAL	MEMBER GROWTH ACTUAL	DROPPED MEMBERS ACTUAL (including transfers)
JULY/AUG/SEPT	12	44	47
OCT/NOV/DEC	2	40	57
JAN/FEB/MAR	12	29	42
APR/MAY/JUNE	23	27	22

GOALS AND ACTUAL NEW CLUBS CUMULATIVE



GOALS AND ACTUAL MEMBERS CUMULATIVE



DROPPED CLUBS: 0	37 CLUBS OF 63 ADDED 1 OR MORE NEW MEMBERS	<u>GENDER DISTRIBUTION</u>	
DROPPED MEMBERS		MALE	882 (71.94%)
DECEASED	18	FEMALE	344 (28.06%)
CLUB CANCELLED	0	Women Percentage Fiscal Year Goal: 38%	
OTHER	150	TOTAL FAMILY UNIT MEMBERS	187
TOTAL	168	FAMILY MEMBERS PAYING HALF DUES	94

[CLICK HERE FOR CUMULATIVE MEMBERSHIP DATA](#)